



BARRACUDA

HOTEL | BRASSERIE



DIRECTIONS

ON FOOT:

Approx. 5 minutes from the Lenzburg train station (towards track 1, to the north) and walk down Breitfeldstrasse towards Zurich. Take a left on Niederlenzer Kirchweg, and then a right on Gustav-Zeiler-Ring, into Ateliergasse.

Wheelchair users can use the lift located at the beginning of Gustav-Zeiler-Ring 4.

PARKING PLACES:

A total of 8 parking spaces are available to our hotel and restaurant guests in our underground parking garage. The principle is "first come, first serve".

In case all our parking spaces are occupied, please use the public parking garage GLEIS 2 located directly next to Barracuda. Please see map to the right.

The prices are:

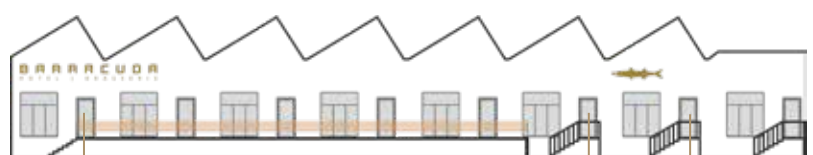
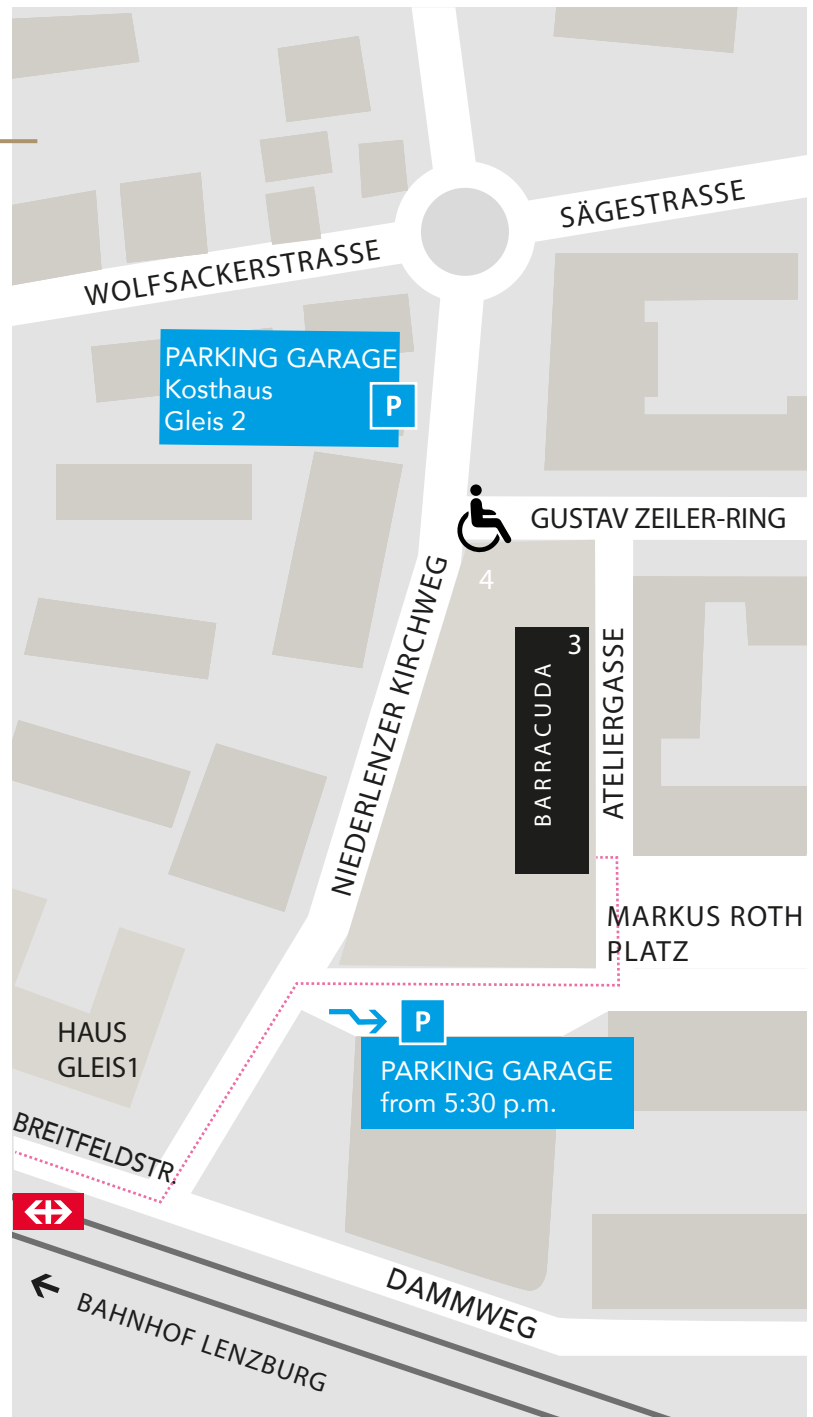
Mo.– Fr., 7 a.m. – 7 p.m., CHF 1.20/hour
 and from 7 p.m. – 7 a.m. -CHF 0.60/hour.

Public parking spaces are also available on Dammweg directly next to the railway tracks. At the Lenzburg train station, you will find more parking spaces of the P Rail Lenzburg.

BARRACUDA HOTEL | BRASSERIE

Ateliergasse 3
 5600 Lenzburg
 Switzerland

+41 62 888 00 10
 info@barracuda.ch
 barracuda.ch



Entrance
Ateliergasse 3

Room 1-6 Room 7